
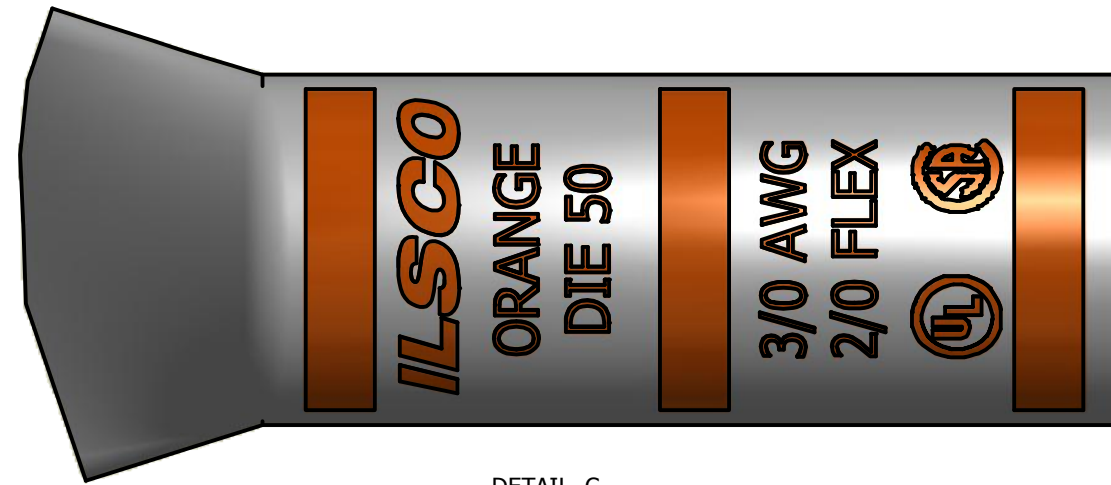
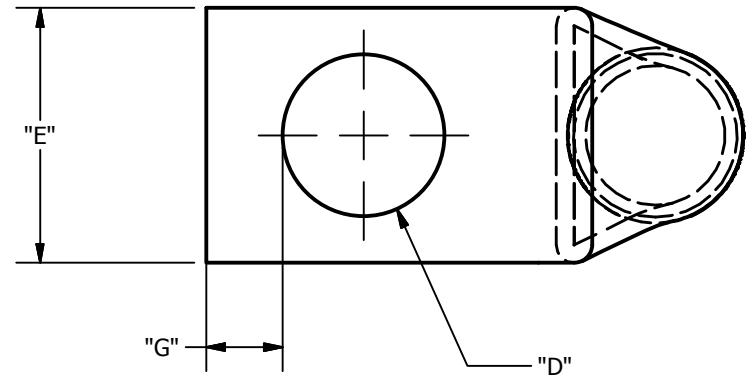
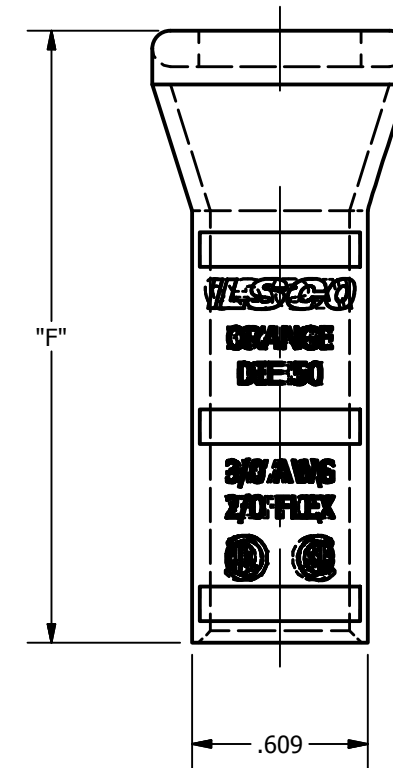
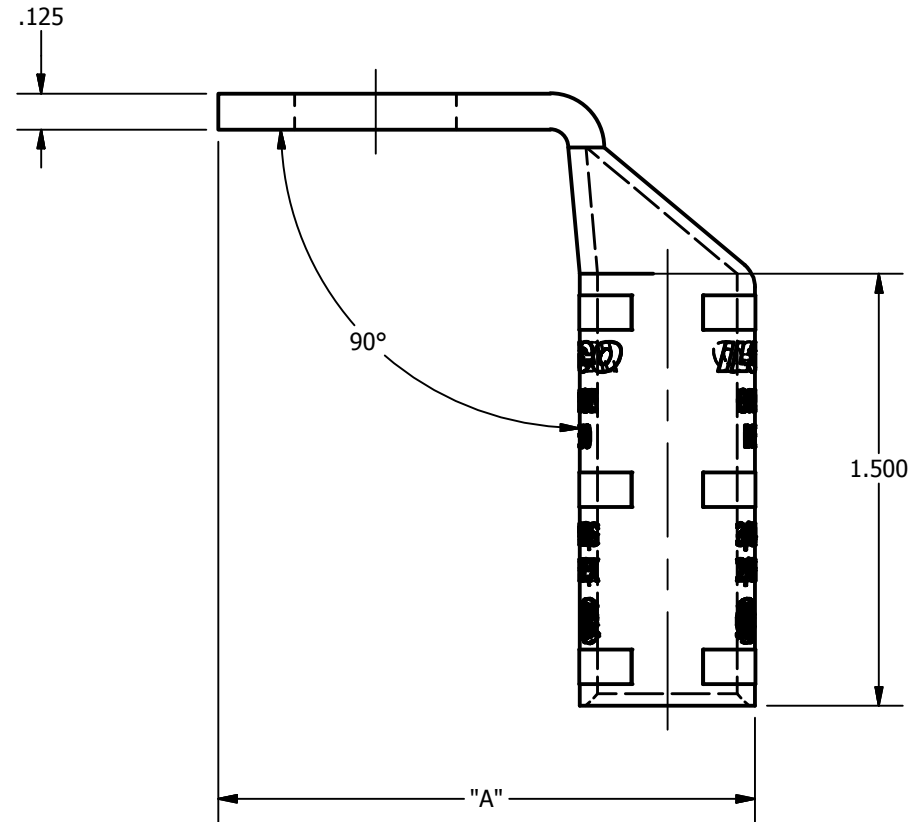


SCREW: NONE	MATERIAL: COPPER	REV: E	 800-776-9775 www.ilSCO.com
CAT. NO.: SEE CHART	PLATING: EL-TIN	DRAWN BY: DW SCALE: NTS	
INFORMATION SHEET: FORM 157	MARKING: SEE CHART	DATE: 6/3/2008 SIZE: B	
			DWG NO: Y0903-S-9
			SHEET: 1 OF 1



DETAIL C
INK MARK TOP & BOTTOM



CATALOG NUMBER	"A"	"D"	"E"	"F"	"G"	TANG MARKING
CLNB-3/0-10-9	1.263	0.219	0.885	2.126	0.148	UL, ILSCO, CSA, CLNB-3/0-10-9, 10, 3/0 AWG, 2/0 FLEX, DIE 50
CLNB-3/0-14-9	1.576	0.281	0.885	2.126	0.180	UL, ILSCO, CSA, CLNB-3/0-14-9, 1/4, 3/0 AWG, 2/0 FLEX, DIE 50
CLNB-3/0-12-9	1.951	0.562	0.885	2.126	0.265	UL, ILSCO, CSA, CLNB-3/0-12-9, 1/2, 3/0 AWG, 2/0 FLEX, DIE 50
CLNB-3/0-58-9	2.138	0.656	0.885	2.126	0.343	UL, ILSCO, CSA, CLNB-3/0-58-9, 5/8, 3/0 AWG, 2/0 FLEX, DIE 50
CLNB-3/0-34-9	2.388	0.781	0.969	2.126	0.359	UL, ILSCO, CSA, CLNB-3/0-34-9, 3/4, 3/0 AWG, 2/0 FLEX, DIE 50
CLNB-3/0-38-9	1.576	0.406	0.885	2.126	0.211	ILSCO, C-3/0-38-90, DIE 50, 3/0 AWG, 2/0 FLEX, UL, CSA
CLNB-3/0-516-9	1.576	0.343	0.885	2.126	0.180	UL, ILSCO, CSA, CLNB-3/0-516-9, 5/16, 3/0 AWG, 2/0 FLEX, DIE 50